

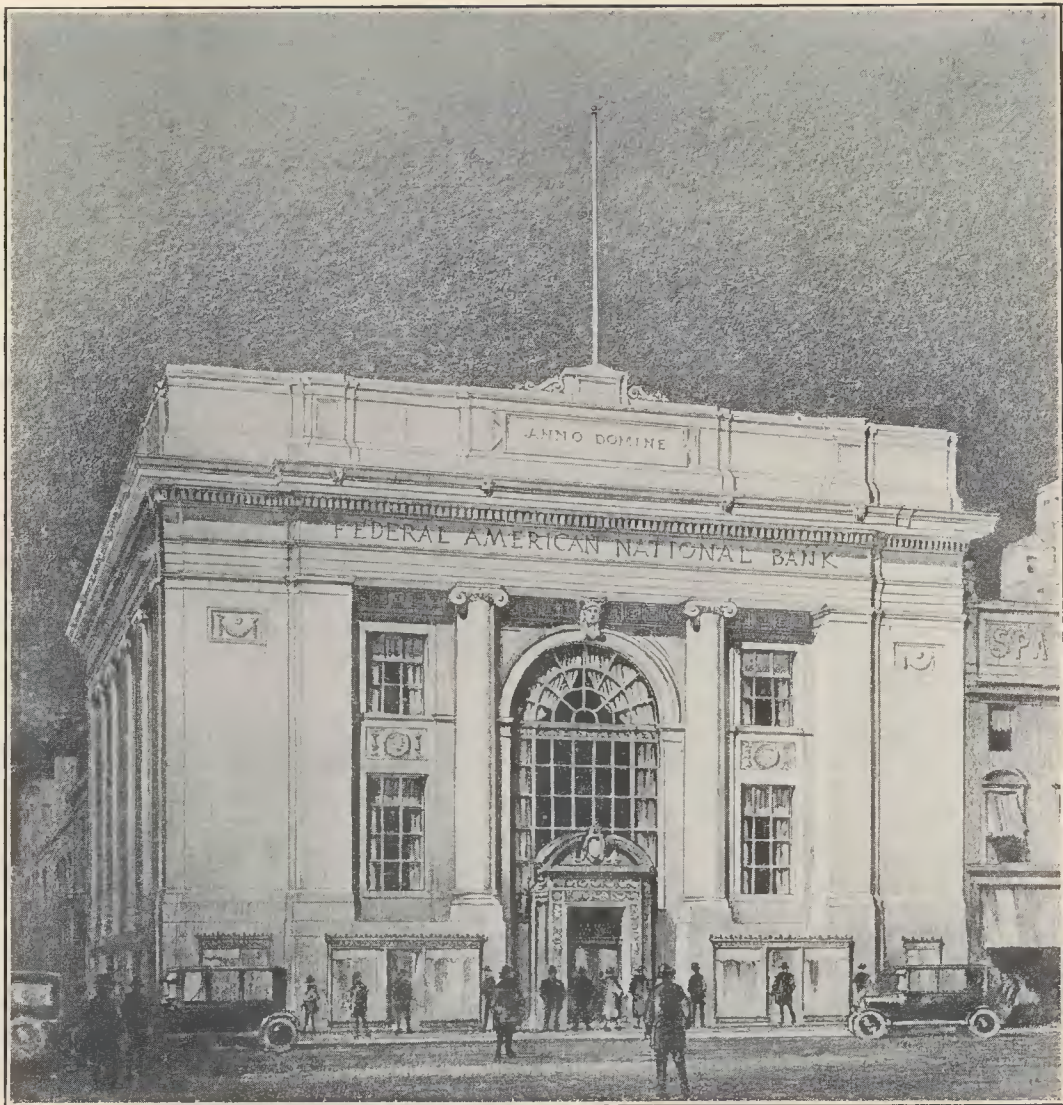
# THE AMERICAN FOREIGN SERVICE JOURNAL



*(Contributed by the Under Secretary of State, Hon. J. C. Grew)*

ON THE SCHEIDEGG, SWITZERLAND, 1924

Vol. I DECEMBER, 1924 No. 3



## FEDERAL-AMERICAN NATIONAL BANK

NOW IN COURSE OF CONSTRUCTION

IN WASHINGTON, D. C.

W. T. GALLIHER, Chairman of the Board

JOHN POOLE, President

RESOURCES OVER \$13,000,000.00



PRESIDENT COOLIDGE

*Harris & Ewing*

# THE AMERICAN FOREIGN SERVICE JOURNAL

PUBLISHED MONTHLY BY THE AMERICAN FOREIGN SERVICE ASSOCIATION

Vol. I. No. 3

WASHINGTON, D. C.

DECEMBER, 1924

## The Presidential Election

By GERHARD GADE

ON November 4 the people of the United States elected Calvin Coolidge President by a popular vote estimated at about 18,000,000—2,000,000 more votes than President Harding received in 1920, although the latter polled 22 more electoral votes than his successor. The popular vote in the last three elections was as follows:

|      |                             |             |
|------|-----------------------------|-------------|
| 1916 | Woodrow Wilson .....        | 9,129,606   |
|      | Charles E. Hughes .....     | 8,538,221   |
| 1920 | Warren G. Harding .....     | 16,152,200  |
|      | James M. Cox .....          | 9,147,353   |
| 1924 | Calvin Coolidge .....       | 18,000,000* |
|      | John W. Davis .....         | 9,000,000*  |
|      | Robert M. La Follette ..... | 4,000,000*  |

\* Estimated.

The increase in the vote of 1920 over 1916 was due to the passage of the Woman Suffrage Amendment.

*Electoral Vote Polled in 1916, 1920 and 1924 by Republican and Democratic Candidates*

| State             | 1916 |      | 1920 |      | 1924 |      |
|-------------------|------|------|------|------|------|------|
|                   | Rep. | Dem. | Rep. | Dem. | Rep. | Dem. |
| Alabama .....     | 12   | ...  | 12   | ...  | 12   | ...  |
| Arizona .....     | 3    | ...  | 3    | ...  | 3    | ...  |
| Arkansas .....    | 9    | ...  | 9    | ...  | 9    | ...  |
| California .....  | 13   | ...  | 13   | ...  | 13   | ...  |
| Colorado .....    | 6    | ...  | 6    | ...  | 6    | ...  |
| Connecticut ..... | 7    | ...  | 7    | ...  | 7    | ...  |
| Delaware .....    | 3    | ...  | 3    | ...  | 3    | ...  |
| Florida .....     | 6    | ...  | 6    | ...  | 6    | ...  |
| Georgia .....     | 14   | ...  | 14   | ...  | 14   | ...  |
| Idaho .....       | 4    | ...  | 4    | ...  | 4    | ...  |
| Illinois .....    | 29   | ...  | 29   | ...  | 29   | ...  |
| Indiana .....     | 15   | ...  | 15   | ...  | 15   | ...  |
| Iowa .....        | 13   | ...  | 13   | ...  | 13   | ...  |
| Kansas .....      | 10   | ...  | 10   | ...  | 10   | ...  |
| Kentucky .....    | 13   | ...  | 13   | ...  | 13   | ...  |
| Louisiana .....   | 10   | ...  | 10   | ...  | 10   | ...  |
| Maine .....       | 6    | ...  | 6    | ...  | 6    | ...  |

| State                | 1916 |      | 1920 |      | 1924 |      |
|----------------------|------|------|------|------|------|------|
|                      | Rep. | Dem. | Rep. | Dem. | Rep. | Dem. |
| Maryland .....       | 8    | ...  | 8    | ...  | 8    | ...  |
| Massachusetts .....  | 18   | ...  | 18   | ...  | 18   | ...  |
| Michigan .....       | 15   | ...  | 15   | ...  | 15   | ...  |
| Minnesota .....      | 12   | ...  | 12   | ...  | 12   | ...  |
| Mississippi .....    | 10   | ...  | 10   | ...  | 10   | ...  |
| Missouri .....       | 18   | ...  | 18   | ...  | 18   | ...  |
| Montana .....        | 4    | ...  | 4    | ...  | 4    | ...  |
| Nebraska .....       | 8    | ...  | 8    | ...  | 8    | ...  |
| Nevada .....         | 3    | ...  | 3    | ...  | 3    | ...  |
| New Hampshire .....  | 4    | ...  | 4    | ...  | 4    | ...  |
| New Jersey .....     | 14   | ...  | 14   | ...  | 14   | ...  |
| New Mexico .....     | 3    | ...  | 3    | ...  | 3    | ...  |
| New York .....       | 45   | ...  | 45   | ...  | 45   | ...  |
| North Carolina ..... | 12   | ...  | 12   | ...  | 12   | ...  |
| North Dakota .....   | 5    | ...  | 5    | ...  | 5    | ...  |
| Ohio .....           | 24   | ...  | 24   | ...  | 24   | ...  |
| Oklahoma .....       | 10   | ...  | 10   | ...  | 10   | ...  |
| Oregon .....         | 5    | ...  | 5    | ...  | 5    | ...  |
| Pennsylvania .....   | 38   | ...  | 38   | ...  | 38   | ...  |
| Rhode Island .....   | 5    | ...  | 5    | ...  | 5    | ...  |
| South Carolina ..... | 9    | ...  | 9    | ...  | 9    | ...  |
| South Dakota .....   | 5    | ...  | 5    | ...  | 5    | ...  |
| Tennessee .....      | 12   | ...  | 12   | ...  | 12   | ...  |
| Texas .....          | 20   | ...  | 20   | ...  | 20   | ...  |
| Utah .....           | 4    | ...  | 4    | ...  | 4    | ...  |
| Vermont .....        | 4    | ...  | 4    | ...  | 4    | ...  |
| Virginia .....       | 12   | ...  | 12   | ...  | 12   | ...  |
| Washington .....     | 7    | ...  | 7    | ...  | 7    | ...  |
| West Virginia .....  | 7    | 1    | 8    | ...  | 8    | ...  |
| Wisconsin .....      | 13   | ...  | 13   | ...  | 13   | ...  |
| Wyoming .....        | 3    | ...  | 3    | ...  | 3    | ...  |
| Total .....          | 254  | 277  | 404  | 127  | 382  | 136  |

N. B.—In 1924 La Follette carried Wisconsin's 13 electoral votes.

The Republican Party obtained working majorities in both branches of the Sixty-ninth Congress. In the House the Republicans won 245 seats, the Democrats 185, the Farmer-Laborites 3, and the Socialists 2. At the adjournment of Congress last June there were 224 Republicans, 209 Democrats, 1 Independent, 1 Farmer-Laborite, and 1 Socialist

in the House of Representatives. The returns thus show a Republican net gain of 21 seats and a Democratic loss of 24.

*The Representation in the House of the Sixty-ninth Congress will be as follows:*

| State          | Rep.       | Dem.       | F.-L.    | Soc.     |
|----------------|------------|------------|----------|----------|
| Alabama        | 10         | ...        | ...      | ...      |
| Arizona        | 1          | ...        | ...      | ...      |
| Arkansas       | 7          | ...        | ...      | ...      |
| California     | 9          | 2          | ...      | ...      |
| Colorado       | 3          | 1          | ...      | ...      |
| Connecticut    | 5          | ...        | ...      | ...      |
| Delaware       | 1          | ...        | ...      | ...      |
| Florida        | 4          | ...        | ...      | ...      |
| Georgia        | 12         | ...        | ...      | ...      |
| Idaho          | 2          | ...        | ...      | ...      |
| Illinois       | 22         | 5          | ...      | ...      |
| Indiana        | 10         | 3          | ...      | ...      |
| Iowa           | 11         | ...        | ...      | ...      |
| Kansas         | 6          | 2          | ...      | ...      |
| Kentucky       | 3          | 8          | ...      | ...      |
| Louisiana      | 8          | ...        | ...      | ...      |
| Maine          | 4          | ...        | ...      | ...      |
| Maryland       | 2          | 4          | ...      | ...      |
| Massachusetts  | 13         | 3          | ...      | ...      |
| Michigan       | 13         | ...        | ...      | ...      |
| Minnesota      | 7          | ...        | 3        | ...      |
| Mississippi    | 8          | ...        | ...      | ...      |
| Missouri       | 7          | 9          | ...      | ...      |
| Montana        | 1          | 1          | ...      | ...      |
| Nebraska       | 3          | 3          | ...      | ...      |
| Nevada         | 1          | ...        | ...      | ...      |
| New Hampshire  | 2          | ...        | ...      | ...      |
| New Jersey     | 10         | 2          | ...      | ...      |
| New Mexico     | 1          | ...        | ...      | ...      |
| New York       | 20         | 22         | ...      | 1        |
| North Carolina | 10         | ...        | ...      | ...      |
| North Dakota   | 3          | ...        | ...      | ...      |
| Ohio           | 16         | 6          | ...      | ...      |
| Oklahoma       | 1          | 7          | ...      | ...      |
| Oregon         | 3          | ...        | ...      | ...      |
| Pennsylvania   | 35         | 1          | ...      | ...      |
| Rhode Island   | 2          | 1          | ...      | ...      |
| South Carolina | 7          | ...        | ...      | ...      |
| South Dakota   | 3          | ...        | ...      | ...      |
| Tennessee      | 2          | 8          | ...      | ...      |
| Texas          | 1          | 17         | ...      | ...      |
| Utah           | 2          | ...        | ...      | ...      |
| Vermont        | 2          | ...        | ...      | ...      |
| Virginia       | 10         | ...        | ...      | ...      |
| Washington     | 4          | 1          | ...      | ...      |
| West Virginia  | 5          | 1          | ...      | ...      |
| Wisconsin      | 10         | ...        | ...      | 1        |
| Wyoming        | 1          | ...        | ...      | ...      |
| <b>Total</b>   | <b>245</b> | <b>185</b> | <b>3</b> | <b>2</b> |

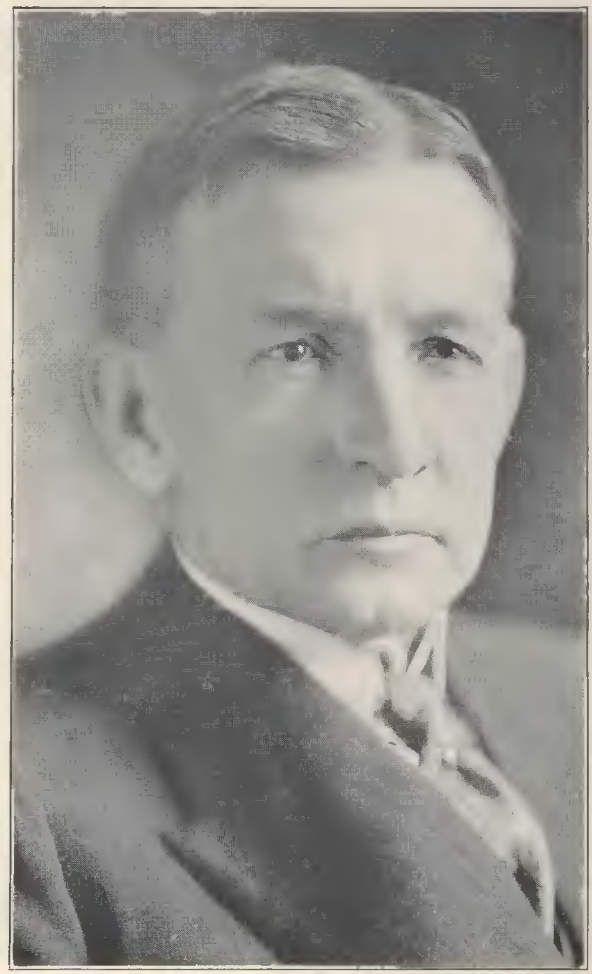
The solid Republican delegation from Pennsylvania apparently was broken by the Twentieth District which elected Warren North Bailey, Democrat, by a margin of only 14 votes. According to the official count, Bailey polled 23,524 and A. H. Walters, the Republican candidate, 23,510 votes.

Frederick R. Gillett's election to the Senate will precipitate a contest for Speaker of the House

between Nicholas Longworth, of Ohio, the present Republican floor leader, and Martin B. Madden, of Illinois, chairman of the Committee on Appropriations. If Longworth is elected Speaker, it is probable that Representative Snell, of New York, present chairman of the Committee on Rules, will become floor leader. Congressman Finis J. Garrett, of Tennessee, will lead again the Democratic minority in the incoming House.

In the Senate the Administration Organization will have a slimmer margin of control. Although 54 Senators are listed as Republicans, this number includes La Follette and the four Senators

*(Continued on page 99)*



*Harris & Ewing*

VICE-PRESIDENT-ELECT CHARLES W. DAWES

# Horseback Rides About Mexico City

By H. DORSEY NEWSON and STUART E. GRUMMON

ONE hears much of the ideal climate of Mexico City—of the charm and beauty of its architecture and the picturesque variety of its people, but strange to say, few have praised the charm and variety which the surrounding countryside offers to the enthusiastic horseman. On every hand there is a different type of scenery so that any taste, even the most jaded and finicky, may be satisfied. A few miles out to the southwest one finds a modern replica of the haunts of Roland complete with virgin forests and rocky glens. To the west may be seen even from high buildings in the Capital, ten miles distant, a sunlit scene which but for the profusion of maguey might be located in Palestine. An old convent, still the goal of yearly pilgrimages, raises its bleak sides from the crest of a sun-baked hill. To the northeast Guadalupe, the shrine and the basilica, might be in still another land from its total contrast to the other two. Above and beyond all to the southward, Popocatepetl and the Sleeping Woman (she of the unpronounceable name) slumber majestically in white-capped splendor, dreaming of the bygone glory of the Aztecs, and meditating upon the enigma of modern Mexico.

In what world capital of the size and importance of Mexico City can the horse lover have his mount brought to his very door and with but a block or two of pavement, at most, reach a bridle path on an avenue rivalling in beauty the Champs Elysées, and ending in a park rich in botanical

specimens and shaded by unique trees of Pantagruellian proportions and Dantesque shadow and mystery? Where else, from such a park, can this lover of horseflesh gallop out into an open country, now flat, now rolling, now mountainous, of the type of that bordering upon Chapultepec Park?



(Contributed by Diplomatic Secretary Stuart E. Grummon)

## THE VENICE OF MEXICO

Mexican dogs, yellow, black, near-white, all curs, all yelping, and all snapping at the horses' hoofs until finally the use of the whip sent them scurrying away against the feet and shins of an Indian almost completely concealed by a huge yellow wardrobe at least twice his size, which, with the aid of an ingenious contraption of ropes and twine, he was balancing on his back, and

These country districts offer a heterogeneous collection of types of humanity, particularly in the vicinity of the larger towns where a religious holiday coupled with liberal applications of the celebrated "pulque" (the local firewater) bring most of the population to the roadside, moving toward the city in scattered groups. In the rainy season the highways are bearable and the turf fairly soft under foot for the horse, but during the dry season the aspect of the average road about the City compares favorably with the dust cloud accompanying a battery of 75's on a French highway in the A. E. F.

Leaving Mexico for a Sunday's ride we made a mental inventory of the contents of one of the roads near the outskirts of the City, and first encountered the ever-present flock of



shuffling along with that half trot, half walk characteristic of the Objibway Indian under a canoe on a Canadian portage. Behind Atlas and the Wardrobe came a flock of some five or six dozen turkeys complaining loudly that their end was near, the company urged on from behind by two small boys wearing large straw hats, once white shirts and each armed with a whip which was periodically applied to the backs of the unfortunate fowl.

On the right of the road an ancient and discouraged looking piece of horseflesh, redeemed only by the beauty of the ornamental horsehair bridle and silver inlaid Mexican Charro saddle, across whose pommel a live goat was bound, was being unwillingly urged on in semi-discouraged fashion by what looked like a cross between Buffalo Bill and the Sheriff of a Fred Stone Central American Musical Comedy. This individual's hat might, if on a stick, have been well mistaken for a large umbrella as far as its size and shape were concerned; his brown leather vest was half concealed by a scarlet sash, while at the

end of his legs, which went vertically down without break to wide-shoe-like stirrups, huge spurs with rowels as big as the top of a tobacco can and spiked like the noonday sun, dug themselves with a gay, clinking sound at regular intervals into the ribs of the bored and disinterested animal.

The town of Guadalupe-Hidalgo, toward which we were moving, abounds in tradition and history, having as the center of this sanctum sanctorum of Catholic Mexican religious life, the shrine of the Virgin of Guadalupe. The legend goes that in 1531 an Indian rejoicing in the name of Juan Diego was on his way to Tlaltelolco to say mass when extremely delicious music smote his ears and the figure of the Virgin, surrounded by brilliant light, appeared suddenly before him and instructed him to go to the bishop and make known her wish that on the spot where she had appeared, a church should be built. Juan Diego made several unsuccessful attempts to convince Bishop Zumarraga of the truth of his statements until on the 12th of December he returned to that dignitary and dis-

*(Continued on page 92)*



*(Contributed by Diplomatic Secretary H. Dorsey Newson)*

# Madrid—Where The Centuries Meet

By CONSUL AUGUSTIN WILLIAM FERRIN

THE American traveller who wants mediæval romance combined with modern comfort can find it nowhere better than in Madrid, where the old and the new meet face to face, and sometimes fight, as when a tandem team of three mules disputes a narrow right of way with tramcar or motor-truck.

Looking out of the windows of the Consulate into the Gran Via, wide as Broadway in New York and with as imposing new buildings on it, one sees passing, at the same time diminutive donkeys, carrying milk cans in panniers, mules drawing huge two-wheeled covered carts filled with wine-skins, human beasts of burden with big boxes on their heads, trim taxicabs and luxurious motorcars, from one of which the Queen has just alighted, to visit the modiste's shop across the way.

The Gran Via is typical of the fashion in which the past survives in Spain, and manages generally to get on well with the present. In its fine shops articles of the "dernier cri" can be purchased, and outside the same shops one may buy a drink of water from an earthenware carafe which Don Quixote would recognize, were he to come to visit his fellow men of arms in their club on the next corner.

In front of this club sit smartly uniformed officers, wearing glittering decorations won in the war with the Moors which has been in progress for ten centuries. At less aristocratic cafés on the sunny sidewalks, soldiers with the green caps which indicate Moroccan service are taking their mid-morning coffee or chocolate and greeting their passing friends, many with their arms in slings or walking with the aid of crutches, more affecting memorials of Morocco than gold and silver medals.

Non-military pedestrians on the busy pavements dress, look and walk like Americans; it is only when one hears them speak Spanish that one suddenly feels oneself a stranger.

Some straight and narrow ways debouch into the Gran Via, but most of the streets in this part of the city are wide and flanked by great edifices which would not be out of place in Paris. The Paseo de Recoletos, into which the Gran Via leads, joins with the Paseo del Prado and Paseo de la Castellana to make one of the world's most famous and beautiful boulevards. Beside the boulevards are great, green parks, and in the "barrios" beyond rise the private palaces of the rich and high, handsome apartment houses, whose tenants ride up to their flats in electric elevators and inside their spacious quarters enjoy every luxury. Hotels on the Paseo del Prado and elsewhere are as good as anywhere. Transportation to and from them is by taxi, tram, and even subway, for the Metro system has undermined the town with tunnels in which fast trains fly back and forth like weaver's shuttles.

From this cosmopolitan city "dos pasos" (two steps), as the Spaniards say, take one into the sixteenth century, through the stone portals of the Plaza Mayor, quadrangular scene of former bull fights, autos-da-fé, and of more than one insurrection in the good old days of red blood. Sauntering round the Plaza under the shelter of its arcades one may easily conjure up pictures of the past, blurred only a little by the trams, no resisters of antiquities, which make the Plaza their



(Contributed by Consul Augustin W. Ferrin)

MODERN MADRID



terminus. But the trams cannot go down the "Staircase of Little Stones" which leaves the Plaza at the southeast corner and carries one into "España de Veras." Not even a carriage can get into some of these streets, which the haughty feet of Cardinal Cisneros have trod going to his palace, yet existing, not far from the still standing tower where Carlos Quinto confined Francis the First of France.

The Ayuntamiento, palace of the Papal Nuncio, and many more monuments of the sixteenth and seventeenth centuries continue to fulfill their ancient functions, far in spirit if not in position, from the madding crowd of modern Madrid. On a moonlit walk in this maze of crooked alleyways, one ought to meet many ghosts who "could a tale unfold whose lightest words would harrow up our souls," and sufficiently sympathetic eyes might see phantom damsels looking down from the grilled balconies of these time-darkened dwellings.

In this quarter are inns, well patronized, as unlike the hotels of the new town as Noah's Ark to the Leviathan. "Posadas," they call them—caravanserai in which the farmer and his faithful mule or horse sleep under the same roof, while the tired cart rests in the patio. In such a tavern as this Sancho was tossed in the blanket. The food in these inns is good, and truly Spanish, inviting repeated visits from newspaper men, artists and other Bohemians.

But one need not go to the "barrios bajos" to see sights reminiscent of the age of Felipe II. One has only to stay out until 11 p. m., which means coming home right after dinner, for Madrid doesn't dine until 10, to be let into one's house by a "sereno" or night-watchman who carries keys to all the houses on the block and

with his bull's-eye lantern, makes one think at once of Gilbert and Sullivan. Without the assistance of the "sereno" one would have to sleep in the streets, for no one but a professional key carrier could bear the burden of the kind of front door key used in Spain.

The old Spanish traditions, alas, are fading fast, and the "sereno" will probably soon unlock the last door which leads to Lethe, the river of oblivion, and perhaps the toreador will slip through behind him. Bull fights still draw great crowds, but it must be an extra good "corrida" to attract as many attendants as a football match. Madrid is football mad this year. Several international matches have been played, some won by Spain from England, and the enthusiasm which marked the matches was intense.

In another decade, perhaps less, there will be little of old Spain left in Madrid. The time to see it, before it becomes indistinguishable from other capitals, is now.



(Contributed by Consul Augustin W. Ferrin)

PALACE OF THE NUNCIO

## REVOLUTIONARY STAMPS

Mr. Robert L. Keiser, American Consul at Tegucigalpa, has received a request for

postage stamps couched in the following terms:

DEAR SIR:

I am collecting stamps and wondered if I wrote to you you might send me some canceled ones. I read the paper a few days ago and saw that they was a war going on in Honduras. The minet I saw it I says to myself, "Gee, I bet they may have war stamps there." I am not expecting you to get war stamps though, because they may not be any anyways.

Thanking you in advance,  
Sincerely yours,

# Batik in Java

By ROLLIN R. WINSLOW

FOR centuries the Javanese have been making their dresses and head coverings from "batik" cloth. This ancient custom of drawing designs on cloth in wax and dyeing the uncovered part is said to have originated with the Javanese and is now the most strictly characteristic of all the native industries in Java.

As will be surmised, the methods used for dyeing in Java are extremely primitive, the use of tubs being general. However, there is little probability that these methods will be supplanted by modern machinery methods for many years to come, owing to the cheapness of labor. The dyeing industry as a whole is a very large and important one in Java, but it is composed of hundreds and thousands of small native establishments which employ only four or five persons each. The wages paid do not generally exceed \$0.25 per day, though some expert batik designers get as high as \$0.50 to \$0.60 per day. The introduction of modern dyeing methods would throw thousands of people out of employment, and as Java, with its 35,000,000 inhabitants, is

the most densely populated district in the world, this would be a calamity. The average native has a low mentality, and if deprived of the livelihood to which he has devoted the greater part of his life would become a public charge.

Among the most important articles of wearing apparel worn by the natives of Java are "sarongs," "slendangs," "kain kapala." All of these are made of "batiked" cotton cloth and are worn by the natives of all classes. Each section of the island is characterized by its own special designs and colors, and different classes are also distinguishable by particular designs and colors. Thus the "batik" of the Central Provinces or "Vorstenlanden" is characterized by old designs in blues and browns, while the "batik" of Pekalongan is characterized by vivid colors and designs in flowers, birds, animals, et cetera.

The "sarong" or every-day skirt is worn by men, women and children. For men and women they are generally pieces of "batiked" cotton cloth 84 inches long by 42 inches wide. These are wrapped around the body from the hips down

and tucked in at the top to keep them in place. A stranger, simpler and yet more practical costume could hardly be imagined. One seldom sees on the streets repetitions of the same design or color, and to count the different patterns seen in a single stroll would constitute a strenuous effort. In early morning it is quite a spectacle to witness the natives bathing in the rivers. Men and women alike bathe in rivers bordered by streets along which the European population passes in motor cars, but the bodies of the natives are seldom seen, for they wade into the water to their knees and then gradually unwrap their "sarongs" as they wade into deeper water and finally sub-



*Courtesy of Tassilio Adam*

HIS HIGHNESS THE SULTAN OF DJOKJAKARTA  
*Covering his lap a royal pattern of batik*

merge themselves while holding their "sarongs" above their heads. The dressing process is equally as modest.

The "slendangs" are only worn by the women. They are pieces of "batiked" cotton or silk cloth, 84 inches in length by 21 inches in width. The "slendang" is used as a breastcloth, a scarf or as a bandolier slung across the shoulder for use in carrying babies or goods purchased in the native market.

The "kain kapala," or headdress, is only worn by the men. It is a kerchief of "batiked" cotton, 42 inches square, which is tied on the head in various ways according to the section of the country to which a man belongs. Thus a Javanese, Madurese or Sundanese is generally identified by the way he wears his "kain kapala."

The Javanese have been making "batik" for centuries and patterns used ages ago may be seen today on the streets of Java. Though processes similar to "batik" are known in other parts of the world, it is safe to say that nowhere has it been developed to such an art as in Java. The Tamils of the Coromandel coast in India are reported to have prepared cloths of polychromatic design as far back as 1742, but so far as is known no writers have maintained that the batik industry in Java owes its origin to ancient India where the process was quite different, owing to the use of brushes and wooden stamps. J. E. Jasper and M. Pirngadie in their book entitled "De Inlandsche Kunstnijverheid in Nederlandsch Indie, III. De Batik-kunst" also called attention to two Egyptian grave cloths, to an ancient cloth found in Bokhara and to a Chinese screen of the eighth century, all of which appear to have been decorated by the use of a wax which kept part of the materials from the dyes. Whether or not Egypt, Persia, India or China is a mere matter of conjecture and is of little importance in view of the manner in which the Javanese have developed the art, which, if it once existed, is no longer known in the countries above named, with the possible exception of India.

The word "batik" may be used as a verb, noun or adjective. To batik means in Javanese: to design, trace or paint, but technically it means to draw with molten wax upon cotton cloth. It is spelled in various ways as "battik," "battek," "battick," but generally "b a t i k." Some etymologists hold a different opinion, claiming that the true meaning of the word "batik" is "to draw on a surface with a pointed stick" or "covered with drops of wax."

The first operation in the manufacture of

batik is the preparation of the cloth in such a way that the colors will not run too much when applied. This generally consists in soaking and drying the cotton cloth several times a day for a period varying from six to ten days. The bath used was formerly merely rice water, but in some places the ripening bath consists of a mixture of castor-oil, peanut-oil and lye which has been prepared from the ashes of rice stubble. The ripening process varies in different parts of Java. If a particularly velvety or silky effect is desired the operation may take over a month. After the final drying the cloth is carefully smoothed and is then ready for the "batiquese" or batik artist.

The native wax which was used centuries ago was probably of vegetable origin, but today it is practically all petroleum or mineral wax (paraffine) and is sold by the Bataafsche Petroleum Maatschappij through distributors or jobbers. Three or four wax mixtures are used by the workers in Java.

The drawing implement used in applying the wax is known as a "tjanting" or "chanting." In ancient times the "tjanting" was probably nothing but a small piece of hollow bamboo which had been carefully whittled to a sharp point on one end. For some of the heavier and cruder designs, we are told that a cocoon shell with a small spout was used. Today the "tjanting" is a small cup or funnel of the thinnest copper which is fastened into one end of a short bamboo handle. There are various sizes of "tjantings," according to the type of line desired. The average batik worker uses about seven sizes. Drawing designs with a "tjanting" filled with hot wax is an extremely difficult operation. If the wax is too hot it flows too quickly, if too cool the opening closes and the wax will not run at all. To start the wax flowing the worker holds the "tjanting" above her head and blows into the spout.

In starching the cloth with tapioca, sago or rice-flour prior to ironing, the worker must use considerable care for if the starch is too thin the wax will become imbedded in the cloth and will require so much boiling in hot water for its removal that the colors may be harmed.

The art of drawing designs in the hot wax has been handed down from mother to daughter for centuries. Thus, certain designs have often been perpetuated by certain families. In case the design to be applied is one which the worker has not learned by endless repetition then she generally bastes material with the new design to

*(Continued on page 87)*



THE AMERICAN FOREIGN SERVICE JOURNAL

Vol. I DECEMBER, 1924 No. 3

PUBLISHED MONTHLY BY AMERICAN FOREIGN SERVICE ASSOCIATION, WASHINGTON, D. C.

The American Foreign Service Journal is published monthly by the American Foreign Service Association, and is distributed by the Association to its members gratis. The Journal is also open to private subscription in the United States and abroad at the rate of \$4.00 a year, or 35 cents a copy, payable to the American Foreign Service Journal, care Department of State, Washington, D. C.

The purposes of the Journal are (1) to serve as an exchange among American Foreign Service officers for personal news and for information and opinions respecting the proper discharge of their functions, and to keep them in touch with business and administrative developments which are of moment to them; and (2) to disseminate information respecting the work of the Foreign Service among interested persons in the United States, including business men and others having interests abroad, and young men who may be considering the Foreign Service as a career.

Propaganda and articles of a tendentious nature, especially such as might be aimed to influence legislative, executive or administrative action with respect to the Foreign Service, or the Department of State, are rigidly excluded from its columns.

Contributions should be addressed to the American Foreign Service Journal, care Department of State, Washington, D. C.

CONTENTS

Table with 2 columns: Article Title and Page. Includes entries like 'THE PRESIDENTIAL ELECTION—By Gerhard Gade' (74), 'HORSEBACK RIDES ABOUT MEXICO CITY—By H. Dorsey Newson and Stuart E. Grummon' (76), 'MADRID—WHERE THE CENTURIES MEET—By Consul Augustin William Ferrin' (78), 'BATIK IN JAVA—By Rollin R. Winslow' (80), 'DIPLOMATIC AND CONSULAR CHANGES' (82), 'AN AUTOMOBILE RACE OVER COBBLESTONES' (84), 'NECROLOGY' (85), and 'A TRIBUTE TO EDWARD BELL—By Edward C. Wymme' (86).

DIPLOMATIC AND CONSULAR CHANGES

Rees H. Barkalow, of New Jersey, Third Secretary, detailed to the Department, assigned Third Secretary at Peking.

Edward Bell, of New York, Counselor of Embassy at Legation, Peking, died October 28, 1924.

John N. Hamlin, of Oregon, newly appointed Foreign Service Officer, unclassified, assigned as Third Secretary at Tirana.

Joseph S. Kornfeld, of Ohio, Minister to Persia, resigned October 23, 1924.

Wallace S. Murray, of Ohio, Second Secretary at Teheran, promoted from Foreign Service Officer of Class 6 to Class 5.

Harold L. Williamson, of Illinois, Third Secretary at Bogota, detailed to Department temporarily.

Paul H. Alling, of Pennsylvania, newly appointed Foreign Service Officer, unclassified, assigned as Vice Consul at Beirut.

George A. Armstrong, of New York, newly appointed Foreign Service Officer, unclassified, assigned as Vice Consul at Zurich.

William H. Beach, of Virginia, newly appointed Foreign Service Officer, unclassified, assigned as Vice Consul at Bombay.

Thomas H. Bevan, of Maryland, Consul now at Montevideo, assigned to Hamburg.

Ellis A. Bonnet, of Texas, now Vice Consul and Clerk at Piedras Negras, promoted to be a Foreign Service Officer, unclassified, and assigned as Vice Consul at Piedras Negras.

George L. Brandt, of District of Columbia, Consul now detailed to Messina, detailed to Department.

William W. Brunswick, of Kansas, Consul now at La Rochelle, assigned to Niagara Falls.

Prescott Childs, of Massachusetts, newly appointed Foreign Service Officer, unclassified, assigned as Vice Consul at Canton.

Harris N. Cookingham, of New York, Consul now at Tunis, assigned to Saigon.

Edward A. Dow, of Nebraska, Consul now at Algiers, assigned to Rotterdam.

Robert F. Fernald, of Maine, Consul now detailed to Stockholm, assigned to Saloniki.

Robert Frazer, of Pennsylvania, Foreign Service Officer detailed as Inspector, assigned as Consul General at Zurich.

Arthur Garrels, of Missouri, now Foreign Service Officer detailed as Inspector, assigned as Consul General at Athens.



William P. George, of Alabama, Consul now at Teneriffe, detailed to Buenos Aires.

Albert H. Gerberich, of Pennsylvania, Consul now detailed to Bremerhaven, assigned to Maracaibo.

Raleigh A. Gibson, of Illinois, Consul now detailed to Buenos Aires, assigned to Teneriffe.

Joseph T. Gilman, of Massachusetts, newly appointed Foreign Service Officer, unclassified, assigned as Vice Consul at Athens.

Winthrop S. Greene, of Massachusetts, now Clerk at Cobh, promoted to be a Foreign Service Officer, unclassified, assigned as Vice Consul at Cobh.

George J. Haering, of New York, newly appointed Foreign Service Officer, unclassified, assigned as Vice Consul at Kobe.

Lewis W. Haskell, of South Carolina, Consul now at Geneva, assigned to Algiers.

Samuel W. Honaker, of Texas, Consul, assigned to Smyrna.

Benjamin M. Hulley, of Florida, newly appointed Foreign Service Officer, unclassified, assigned as Vice Consul at Stockholm.

John R. Ives, of Michigan, now Clerk at Hamburg, promoted to be a Foreign Service Officer, unclassified, and assigned as Vice Consul at Hamburg.

Theodore Jaeckel, of New York, Consul now at Hamburg, promoted to be a Consul General and assigned to Warsaw.

William O. Jones, of Pennsylvania, Vice Consul now at Konigsberg, assigned to Malmo.

Robert L. Keiser, of Indiana, Consul now at Tegucigalpa, assigned to Messina.

Rufus H. Lane, of Virginia, newly appointed Foreign Service Officer, unclassified, detailed to Department.

Will L. Lowrie, of Illinois, Consul General now at Athens, assigned to Wellington.

O. Gaylord Marsh, of Washington, Consul now at Progreso, assigned to Montevideo.

Richard G. Monges, of California, Vice Consul now at Warsaw, resigned November 10, 1924.

Leland B. Morris, of Pennsylvania, Consul now at Saloniki, assigned to Cologne.

Robert L. Mosier, of Indiana, Vice Consul now at Valparaiso, assigned to Concepcion.

George H. Murphy, of North Carolina, Consul General at Zurich, died October 16, 1924.

C. Warwick Perkins, Jr., of Maryland, newly appointed Foreign Service Officer, unclassified, assigned as Vice Consul at Vienna.

Joseph P. Ragland, of District of Columbia,

newly appointed Foreign Service Officer, unclassified, assigned as Vice Consul at Monterey.

Robert L. Rankin, of New Jersey, Consul now at Frontera, assigned to Newcastle, New South Wales.

Emil Sauer, of Texas, Consul at Cologne, assigned to Pernambuco.

Rudolf E. Schoenfeld, of District of Columbia, Consul now detailed to Berlin, detailed to Cologne temporarily.

Edwin Schoenrich, of Maryland, newly appointed Foreign Service Officer, unclassified, assigned as Vice Consul at Valparaiso.

William W. Schott, of Kansas, Vice Consul at Gibraltar temporarily, reassigned to Palermo.

George P. Shaw, of California, Consul now at Puerto Cortes, assigned to Tegucigalpa.

Leland L. Smith, of Oregon, Consul now at Saigon, assigned to Tunis.

W. Maynard Stapleton, of Pennsylvania, newly appointed Foreign Service Officer, unclassified, assigned as Vice Consul, Sydney, New South Wales.

Howard C. Taylor, of South Dakota, now Clerk at Stuttgart, promoted to be a Foreign Service Officer, unclassified, and assigned as Vice Consul at Stuttgart.

Cyril L. F. Thiel, of Illinois, newly appointed Foreign Service Officer, unclassified, assigned as Vice Consul at Calcutta.

Frederick L. Thomas, of New York, Consul now detailed to Calcutta, detailed to Mukden.

R. A. Wallace-Treat, of Ohio, Consul now detailed to Smyrna, detailed to Angora.

S. Pinkney Tuck, of New York, Consul now detailed to Department, assigned to Geneva.

Romeyn Wormuth, of New York, Consul now at Newcastle, New South Wales, assigned to St. John, New Brunswick.

#### NONCAREER OFFICERS

John W. Bailey, of Texas, now Clerk at Geneva, appointed Vice Consul there.

James M. Bowcock, of Colorado, Vice Consul now at Munich, appointed Vice Consul at Turin temporarily.

Lawrence F. Cotio, of Massachusetts, Vice Consul now at Cartagena, appointed Vice Consul at Buenaventura.

George D. Cowden, of Texas, Consular Agent at Lobos, Mexico, resigned.

Koyne V. Gram, of Illinois, now Clerk at Rangoon, appointed Vice Consul there.

Elton N. Hoyt, of Connecticut, Vice Consul now at Yarmouth, appointed Vice Consul at Charlottetown temporarily.

Assistant Secretary of State and Mrs. Carr entertained at tea on Friday, November 14, for the class of newly appointed Foreign Service officers under instruction at the Department. The guests included the Undersecretary of State, Mr. Grew; Mr. and Mrs. J. Butler Wright; Mr. and Mrs. Hugh R. Wilson; Mr. and Mrs. Edward J. Norton; Mrs. Hengstler, Mr. Hengstler, Mr. Eberhardt, Mr. William Dawson, Mr. and Mrs. Ragland, Mr. and Mrs. Hulley, Mr. and Mrs. Hawkins, Mr. and Mrs. Perkins, Mr. and Mrs. Gilman and Messrs. Thiel, Lane, Beach, Stapleton, Schoenrich, Haering, Armstrong and Childs.

Mr. Edson Lyman Alling, father of Paul H. Alling, newly appointed Foreign Service Officer, died at his home in Hamden, Connecticut, on November 12. On behalf of Mr. Alling's colleagues in the Service, the Editors of the JOURNAL tender to him their deep and sincere sympathy.

Ambassador William Miller Collier, after spending some time in Washington and in Auburn, New York, will sail on January first to his post at Valparaiso.

Minister Fred Morris Dearing, after leave spent in the United States, sailed on the George Washington, November first for his post at Lisbon.

Minister F. W. B. Coleman spent his leave in the United States and sailed on the President Roosevelt en route to his post at Riga.

Minister Franklin E. Morales spent a part of his vacation at Atlantic City.

Minister Arthur Geissler from Guatemala, has gone to his home in Oklahoma City for a brief visit.

Ministers Theodore Brentano and Lewis Einstein are in the United States on leave of absence from their posts at Budapest and Prague, respectively.

John N. Hamlin, Third Secretary of the Legation at Tirana, called at the Department, en route to his home at Springfield, Oregon.

The following Diplomatic Secretaries called at the Department during vacations spent in the United States: Elbridge Gerry Greene, and Cord Meyer.

## AN AUTOMOBILE RACE OVER COBBLESTONES

Paul C. Squire, American Consul at Lille, has kindly submitted the accompanying photograph of a circuit near Lille where automobile races were held last September over an 8-mile course paved entirely with cobblestones.

Sénéchal, in a French Chenard-Walcker, won the race—195 miles in 3 hours 35 minutes 18 3-5 seconds, at an average speed of nearly 55 miles per hour.

A popular American car which participated succeeded, despite its weight of over a ton and a half, in making a lap in 10 minutes, but was obliged to retire from the race after having suffered three punctures during the course of 15 minutes. The unlucky pilot ran into a fence and, although he escaped uninjured, lost most of the 1,210 pounds of ballast on which he had relied to hold the car on the road.



*(Contributed by Consul Paul Chapin Squire)*

RACES ON PAVED ROADS NEAR LILLE,  
SEPTEMBER, 1924

Consul General Arthur Garrels, recently appointed to Athens, Greece, sailed for his post on November 27.

Consul George L. Brandt, formerly at Messina, has been detailed for duty in the Department.

Thomas S. Horn, Consul at Salina Cruz, is in the United States recuperating from an attack of appendicitis.

Consul Harry M. Lakin, Editor of the Consular Bulletin during 1923-24, has left for his new post at Durban.

The following Consular officers have called at the Department during leave spent in the United States: George P. Shaw, Tegucigalpa; James G. Finley, Patras; E. Verne Richardson, Port au Prince; Thomas L. Daniels, en route to Rio de Janeiro; William N. Carroll, London; Wade Blackard, Singapore; Loy W. Henderson, Queenstown; John G. Erhardt, Athens; John F. Simons, Paris; Louis G. Dreyfus, Jr., Dresden.

Consul General William Dawson returned to the Department from an inspection trip through Central and South America, on October 23, 1924.

Consul General Robert Frazer has sailed for Zurich, to take charge of the Consulate General, succeeding Consul General George H. Murphy.

The Consulate at Kovno claims the distinction of having received a letter from Uncle Sam, and in substantiation submits the following text:

PHILA.,  
Agust 9, 1924.  
*To the America Ambassador in Lituania:*

Dear Sir: Uncle Sam orders you to let Roche Laha and Bluma mother and daughter from Janavo to give them the privilege to come to the United States, they have been waiting long enough to come to America so in the name of our President Coolidge let them come to the U. S.  
UNCLY SAM.

Mr. Albert B. Wells, clerk in the Consulate at Windsor, Ontario, has been elected commander of Windsor Post No. 4 of the American Legion.

On October 6 Consul and Mrs. Thomas R. Wallace celebrated their golden wedding. The JOURNAL takes pleasure in extending its congratulations to Mr. and Mrs. Wallace. Mr. Wallace has only recently retired from the Service after a long and successful career.

### BIRTHS

A son, Austin Roe, 3rd, was born October 16 at Tokyo to Vice Consul and Mrs. Austin R. Preston, Jr.

A son, Robert Edmund, Jr., was born October 16 at Boston, Mass., to Vice Consul and Mrs. R. E. Leary.

A son, Daniel Davis Erhardt, was born November 6 at Winnipeg, Canada, to Consul and Mrs. John George Erhardt.

### MARRIAGES

Farrand-Kirkpatrick—Miss Elsie Kirkpatrick and Vice Consul E. Kitchel Farrand were married at Buenos Aires on October 2.



*(Contributed by Diplomatic Secretary Stuart E. Grummon)*

THE CHURCH OF GUADALUPE

## A TRIBUTE TO EDWARD BELL

By EDWARD C. WYNNE

(Reprinted from *The New York Times*, November 5, 1924)

Permit me to congratulate you on your able editorial, published on October 29, relating to the career of Edward Bell, who died during the past week while on duty at his post in Peking, where he was serving as Chargé d'Affaires of the American Legation. He was indeed, as you stated in the editorial, "the type of American professional diplomat of which the country stands in greater need than ever."

In addition to his great practical knowledge of the subject he was a profound student of international law and diplomatic history, which, added to his brilliant intellect and charming personality, made him the master that he was of the art of diplomatic negotiation. In spite of all this his work as a diplomat is little known throughout the country, and it is to be regretted that such is the case, as few men in public life have rendered more valuable service to the nation in recent years than Edward Bell.

It was my privilege to serve under him as third and as second secretary during the entire period that he was Chargé d'Affaires of the American Embassy in Tokio. During this period (1920-21) he was called on to handle some very difficult problems which might have resulted in international complications but for his resourcefulness in dealing with and disposing of them. Certainly no man could have done more than he did while on duty at Tokio in the way of improving our relations with Japan. I may also state that the manner in which he upheld American prestige in the Far East during this period is something which can only be understood and appreciated by Americans who were then residing in China and Japan.

I emphasize this last matter for the reason that Edward Bell was never one of those idealistic international theorists who believed in sacrificing the vital interests of their country in order to gain the good-will of another nation. Indeed, he was intolerant of the man who acted on or who proposed such a procedure, although nobody believed more strongly than Mr. Bell did in the necessity for international cooperation.

In his diplomatic negotiations it was clear that

Edward Bell was always guided by two motives—first, to carry out the instructions given him by the State Department in the most efficient manner possible, and, secondly, ever to keep the good-will of the nations involved in the negotiations in question. And he never failed to accomplish both of these objects. I do not believe that any American diplomat who served in Japan—not even the great Townsend Harris himself—was more popular with or more respected by the officials of the Japanese Government than Edward Bell. In fact, I shall always be convinced that one of the reasons why the Imperial Japanese Government acted on the invitation of the United States to attend the limitation of armaments conference in the spirit that characterized the island empire's acceptance of that invitation was largely due to the work which Mr. Bell did as Chargé d'Affaires in Tokio.

That keen student of contemporary politics in the United States, Senator Albert J. Beveridge, has declared in a recent work, "The State of the Nation," that "we have few trained diplomats to meet the finished professionals of old nations." The Senator accordingly concludes that "so it has come about that notwithstanding the great ability of our men we have been beaten, with few exceptions, in our more important diplomatic encounters." It must be admitted that there is considerable justification for this conclusion, and it accordingly shows how necessary it is for the American nation to put the conduct of its diplomatic negotiations in the hands of men who are thoroughly familiar with the science of diplomacy. The amateur cannot hope to cope with the professional in diplomacy any more than in anything else—perhaps less so, for there is no career which calls for a more intensive training and a more extensive experience than a diplomatic one.

I join with you in expressing the hope that the new foreign service law will produce more men of the type of Edward Bell. His special abilities are, as you stated, "not easily duplicated," but there is much to be expected from this new law, which should have the effect, if it is only administered properly, of giving the American people a foreign service which will be the equal of the foreign service of any other nation. And certainly we need such a service, for, to quote your words, "each year finds our country more enmeshed in world affairs and thus needing more than ever the best available men in its foreign service. In peace and commerce they constitute the nation's first line of defense."



EDWARD BELL

## BATIK IN JAVA

*(Continued from page 81)*

the cloth she wishes to cover and hangs this over a bamboo rack in such a manner that the light shines through and assists her to outline the new design which she later fills in with free-hand drawing.

In making familiar designs, an outline is first traced and later filled in. When one side is completed the worker turns the cloth over and traces the design on the reverse side by means of the light which shines through the cloth. This same process is repeated as many times as there are colors used. Thus a simple batik with two or three colors and common design will take fully fifteen days of close application of hard work. It often happens that strangers, particularly tourists, in Java, being unacquainted with the manner in which batik is prepared, will choose brightly colored cloths of simple design in preference to the more conservative colors

and intricate designs which represent age-old patterns and the work of many weeks or months. Unless one is acquainted with the way in which batik is prepared he is inclined to consider it of little importance.

In making "batik" the principal dyeing work begins after the design has been drawn in hot wax. The cloth is then put in an indigo bath and subjected to succeeding dippings until the desired shade has been effected. Then the wax is removed and the remaining white or indigo designs are covered with wax and subjected to a chocolate bath known as "kajoe sogu" (a dye obtained largely from a native wood). Later the wax is again removed and other parts covered. Then the cloth is put in a bath composed of ten parts of "koening toewa" (a dark yellow native dye) and one part of Rhodamine (red). This latter bath is peculiar to Djocjakarta (Djocja) and Soerakarta (Solo). Chemists are now endeavoring to imitate this latter bath.

No country is in a better position to testify to the importance of the batik industry than England as a large share of the cotton cloth used comes from Manchester. Holland is next in importance followed by Japan. In 1923 about 15,000,000 kilograms of bleached cottons were imported into Netherlands India. The imports of unbleached cottons amounted to nearly 7,500,000 kilograms, fancy prints 2,000,000 kilograms (slendangs, sarongs, etc.), and about 14,000,000 kilograms of dyed cloths. The bleached cottons above mentioned constitute most of the material used in the manufacture of batik.

The batik workers demand good quality cottons with fine weaves. If the material is closely woven the wax will have difficulty in penetrating the cloth and the drawing of designs will be much easier. The better quality of cotton cloth is known to the natives as "tjap cent." The native workers are quick to recognize the quality of cloth and there is a great preference for particular brands and trade-marks.

As previously stated, the principal dyes used in Central Java are the indigo, "soga" and "kajoe tegerang." Though the use of synthetic indigo is increasing there are still a number of native batik centers where the natural indigo is preferred. Indigo appears in batiks in tens if not hundreds of shades, ranging from very light blue to the darkest shades. In dyeing with native indigo the time required differs greatly, according to the shade desired and the quality of the cloth used. If the cloth is to be sold in the markets it is generally dyed superficially, but the better

grades require a slow and tedious dyeing process.

The indigo baths are often prepared in centralized native, Chinese or Arabian dye-works known as "toekang medel" on a small scale where the native women bring their waxed cloths for the initial dyeing process. The natural indigo is never prepared by the dyers, but is purchased damp in a form known as "nila djawa" in containers of old petroleum tins. In preparing the dye, one cocoanut-shell of "nila djawa" is put in a tub and mixed with water, later "gamping" or lime is added and "goela aren" (aren sugar), the proportions varying in different sections. In some places a petroleum tin of "nila djawa" is put in four or five dye-tubs, in each of which a cocoanut-shell of lime is added and a cocoanut-shell of sugar syrup or molasses. To this mixture the necessary quantity of water is added. The dark indigo may be changed to light indigo by adding more sugar-syrup; when this is done the indigo changes color if exposed to the air. Lime is added as a solvent. If the cloth is destined for

the market the indigo dyeing is hastened by soaking the cloth in a solution of "tingi" (*Cerriops candolleana* Arn, family Rhizophoraceae).

The principal colors used are as follows:

1. Brown—"Soga" used in all sections, but particularly in Central Java.

2. Blue—Indigo used in all sections but particularly in Djokja and Solo (Central Java).

3. Green—Indigo is first used and later auramine (yellow) is applied with a brush. Three qualities of auramine are used, namely, O, OO and II. The O quality is about three times as strong as the II quality, both of which are popular in Pekalongan. Green is a color seldom used in Central Java, i.e., Djokja and Solo, but it is very popular in Pekalongan.

4. Red—Alizarine red (known to the natives as "mengkoedoe") is used all over Java. It is applied with a brush, the cloth not being subjected to a bath. Red is very popular in Pekalongan.

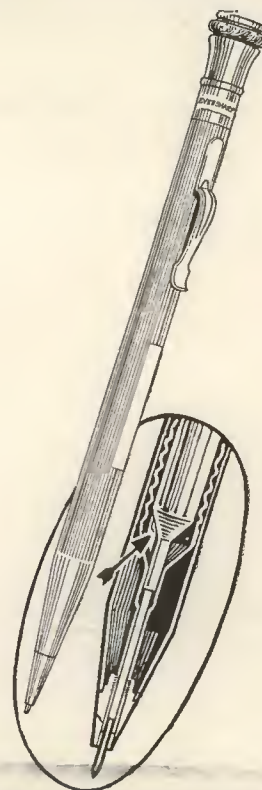
5. Violet—Crystal violet (Schultz No. 516) is used in Pekalongan.

**THE NEW**  
*Perfected*  
**EVERSHARP**  
 Companion to  
**WAHL PEN**

AS YOU use up one piece of lead, the "trigger" eliminates the motions necessary in taking the ordinary pencil apart. It automatically releases the magazine—you simply pull out the plunger and it's ready for more lead. This and five other new features constitute our reasons for calling the New Eversharp the Perfected Eversharp.

*The New Perfected Eversharp is warranted against faulty operation of any kind, from any cause whatever. Eversharp dealers will replace free of charge any part or parts that fail to operate to your entire satisfaction*

If you cannot obtain Wahl Products locally, write direct to us



**THE WAHL COMPANY, NEW YORK, N. Y., U. S. A.**



**Carl M. J. von Zielinski**  
**Leslie B. Cooper Luis M. Alzamora**  
 FOREIGN TRADE AND FINANCIAL ADVISERS

*Specializing in*  
 The handling of Alien Property Custodian Claims, and  
 Miscellaneous Collections Here and Abroad.

New Financing, Funding of Debts, Re-Organization of  
 Foreign Firms, Incorporations Under American  
 Laws, Branch Managements.

Financial Investigations and Credit Information

*Agents and Correspondents*  
 in practically all parts of the world

HAITIAN-DOMINICAN DEVELOPMENT CORPORATION

*Agents for*  
 Savage & Stevens Arms, U. S. Ammunition, and  
 Sonora Phonograph Co.

**E. TOSSE & COMPANY, INC.**

*Exporters of*  
 CHEMICALS AND DRUGS

90-96 Wall Street

New York City

6. Base Yellow—Ten parts of “koenig toewa” and one part auramine. “Koenig toewa” is made by boiling about seven pounds of tegerang wood (cut into small pieces) in a petroleum tin filled with water. After about one-third of the water has evaporated a piece of sugar is added which is about the size of a lemon, a piece of alum about the same size and the juice of three large lemons. The resulting dye when mixed with the auramine is used as a light base yellow. Every effort is being made to imitate this dye which, unfortunately, is not fast.

7. Yellow—Another shade of yellow which is used in Djokja and Solo is made by mixing rhodamine and “koenig toewa” or “koenig toewa.” A similar shade was obtained by American manufacturers and exported to Java during the war as “metanil yellow” (Schultz No. 134). German manufacturers have now imitated this dye but the “koenig toewa”-rhodamine mixture is still popular with the natives.

In dyeing the silk “slendangs” (slendang looktjan) the natives near Soerabaya are said to use a substitute for the “soga” dye. The cloth is soaked for about four days in blue dye

# United States Steel Products Company

30 Church Street,

New York, U. S. A.

Cable Address “Steelmakers, New York”

## Exporters of the Products of

CARNEGIE STEEL COMPANY  
 ILLINOIS STEEL COMPANY  
 AMERICAN STEEL & WIRE COMPANY  
 AMERICAN SHEET & TIN PLATE COMPANY  
 THE LORAIN STEEL COMPANY

AMERICAN BRIDGE COMPANY  
 NATIONAL TUBE COMPANY  
 TENNESSEE COAL, IRON & RAILROAD COMPANY  
 MINNESOTA STEEL COMPANY  
 CANADIAN STEEL CORPORATION

## Branch Offices at

Birmingham, England  
 Bombay, India  
 Brussels, Belgium  
 Buenos Aires, Argentine Republic  
 Calcutta, India  
 Concepcion, Chile  
 Glasgow, Scotland  
 Havana, Cuba  
 Durban, South Africa  
 Lima, Peru  
 Los Angeles, California

London, England  
 Mexico City, Mexico  
 Montreal, Canada  
 New Glasgow, Canada  
 New Orleans, Louisiana  
 Peking, China  
 Port Elizabeth, South Africa  
 Portland, Oregon  
 Rio de Janeiro, Brazil  
 Rome, Italy  
 The Hague, Holland  
 San Francisco, California

Santiago, Chile  
 Sao Paulo, Brazil  
 Seattle, Washington  
 Shanghai, China  
 Soerabaya, Dutch East Indies  
 Sydney, New South Wales, Australia  
 Tokyo, Japan  
 Toronto, Canada  
 Valparaiso, Chile  
 Vancouver, Canada  
 Winnipeg, Canada

## Warehouses at

Antwerp, Belgium  
 Bombay, India  
 Buenos Aires, Argentine Republic  
 Calcutta, India

Callao, Peru  
 Cape Town, South Africa  
 San Francisco, California

Santiago, Chile  
 Sao Paulo, Brazil  
 Talcahuano, Chile  
 Valparaiso, Chile

# Plan Now to Get 7% on Your January Funds

JANUARY is the month in which sound investments are in greatest demand--and sometimes hardest to get at attractive rates of interest. Yet many investors put off until the last moment the selection of investments for their January funds.

As a result it frequently happens that they are unable to obtain the issue, the maturity and the interest rate which they all along have had in mind.

Do not make this mistake with your January funds. Plan now to take advantage of the 7% return on current offerings of strongly secured First Mortgage Bonds that have be-

hind them our record of no loss to any investor in 51 years.

At present we have a selection of 7% bonds available in maturities ranging from 2 to 15 years, and denominations of \$100, \$500 and \$1,000. You may reserve one or more of these bonds now, and arrange the payment without additional cost when your January funds are in hand.

### The Modern Way of Saving at 7%

Instead of only 3% or 4% on your savings, get the full rate of bond interest by using our Investment Savings Plan. Do not wait until you have saved the full price of a bond, but start your money earning 7% immediately.

Descriptions of several current offerings of Smith Bonds and a copy of our booklet, "Half a Century of Investment Safety in the Nation's Capital," will be sent to you promptly upon receipt of the accompanying coupon. Mail it today.

SMITH BONDS ARE SAFE BONDS

## The F. H. SMITH CO.

Founded 1873

SMITH BUILDING

WASHINGTON, D. C.

CLIP COUPON HERE

THE F. H. SMITH COMPANY,  
Smith Building, Washington, D. C.

Please send me descriptions of current offerings of your First Mortgage Bonds that may be reserved for January investment at 7%. Also your booklet, "Half a Century of Investment Safety in the Nation's Capital." 75 R

Name .....

Address .....

and later put in a "tingi" solution which changes the blue to a dark brown. After the color has been fixed with lime the cloth is given a second bath in "tingi." After the cloth is dry it is ready for the wax designs. If a light yellow background is desired auramine is used, and if a dark yellow is desired auramine is mixed with curcuma juice.

When the dyeing process is finished the batiks are ironed; they are then ready for sale. Thus a review of the entire process is as follows:

1. *Ripening*: Alternate soaking and drying of the cloth from five to eight times a day for from six to ten days.

2. *Starching*: A short but important process.

3. *Hemming*: A small hem is made around the edges of the cloth.

4. *Ironing*: Preparatory to making the designs in wax.

5. *Waxing*: Drawing the design in wax often takes twenty days or more.

6. *Indigo dyeing*: The cloth is soaked in indigo vats and dried in the sun from four to six times a day for a period of fully twenty days.

7. *Rewaxing*: After the indigo bath, the parts which are to become colored brown remain unwaxed but all other parts, including those which are to remain white, are rewaxed.

8. *The brown bath* or "soga" receives the cloth three times a day and after each soaking the cloth is dried in the shade. This process varies from one to eight days.

9. *The yellow background*, or cream tint, is applied after all other colors have been used and all wax removed.

The above is the process for a blue-brown cloth; after each dye is applied the wax is taken off and put on in other places. If other colors than blue and brown are applied the process is even more tedious. Infinite patience and considerable talent are required in the making of batik and any foreigner who has seen batik in the process of making is not likely to be inappreciative of its merits.

#### PATTERNS

The most interesting study in the batik industry is that of the patterns and the histories of the various designs. The subject of this report is hardly a fitting cover for such a treatise, but a short review of the leading designs may not be out of place.

Various organizations and students of native art are endeavoring to influence the natives to return to the use of the old patterns of batik.



## Over Fifty Years

**FIFTY-THREE** years of running superior ships in a superior way. Fifty-three years of studying the needs of discriminating travelers. And today—the precision of personal service and the perfection of equipment that characterize every ship of our lines.

### *Sailings to Principal Ports*

To Queenstown (Cobh), Plymouth, Liverpool, London, Southampton, Cherbourg, Antwerp and Hamburg. Sailings every Tuesday, Thursday and Saturday. Departures from New York, Boston, Philadelphia and Montreal. The most complete of schedules—on the finest of ships.

### *A Wide Choice of Accommodations*

In addition to the *Majestic*, world's largest ship, the *Homeric*, *Olympic*, *Belgenland*, the Big Four to Liverpool, and our other de luxe liners, which offer the acme of luxurious ocean travel, our fleet includes twelve delightful cabin ships with surprisingly low rates.

And do not overlook the faultless Second Cabins on our great steamers, splendidly equipped and providing excellent food and accommodations for as little as \$125.

*For information apply to No. 1 Broadway, New York, the company's offices elsewhere or authorized agents*


  
**WHITE STAR LINE**
  


  
**AMERICAN LINE** **RED STAR LINE**
  
INTERNATIONAL MERCANTILE MARINE COMPANY



**YOU NEED INSURANCE OF SOME  
KIND AND I WRITE ALL LINES**

PHONE OR WRITE FOR PARTICULARS  
REGARDING A COMBINATION

**LIFE AND DISABILITY POLICY**

WHICH PROTECTS BOTH YOU AND  
YOUR DEPENDENTS

**WYNDHAM R. WILLS**

601-615 Woodward Building

Main 8510

Washington, D. C.

Each little village and many Javanese families have their special designs which have been handed down to them for generations. Many of these ancient patterns were held in veneration until the present day but under the modern influence patterns which were formerly reserved for the use of the Sultan or Susuhoenan are now being used by laymen without fear of the former heavy penalties which were exacted for such "lese majesté."

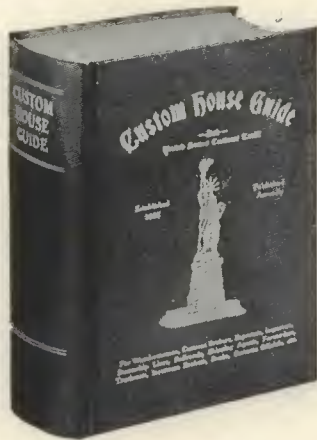
## HORSEBACK RIDES ABOUT MEXICO CITY

(Continued from page 77)

played the figure of the Virgin painted upon his mantle, which convinced all of the genuineness of the vision. In 1810 the soldier-priest Hidalgo y Costella placed a picture of the Virgin on his banner and designated her as patron saint of Mexico in the revolt against Spain.

Of the same type as the Church at Guadalupe are those one sees on the ride from the Country Club to the Pedregal, Coyoacan, and San Angel where, nestling among rows of Tuscan cypresses, behind rambling walls and entrances hung with purple flowers, a long vista through the gateway shows a facade of pink rose and mustard tinted carving behind whose shelter one can imagine ample paunched ecclesiastics, dozing in chairs rich with generous carving of native mahogany, and dreaming, to the tones of monotonous chanting of Palestrina, of the flash of a Castilian eye, or the aroma of a sherry aromatic with the bouquet of decades of fantastic Spanish tradition.

As a ride, too, there are few that are more



Circulation  
Throughout  
the World

For CONSULS this 63-year-old U. S. Customs Reference publication is indispensable in answering the many inquiries from Traders having business relations with the U. S. A.

### U. S. CUSTOMS TARIFF

20,000 Articles, Alphabetically Arranged, included in the  
NEW 1924 EDITION

ESTABLISHED 1862—PUBLISHED ANNUALLY

### CUSTOM HOUSE GUIDE

1,500 PAGES OF CUSTOMS INFORMATION

- 1 United States Customs Tariff—Alphabetically Arranged—Giving Commodity, Rate of Duty, Paragraph Number, and Treasury Decisions of 20,000 commodities.
- 2 Authoritative Directory of Warehousemen, Customs Brokers, Importers, Exporters, S. S. Lines, Banks, Consuls, Bonded Truckmen, Railroads, Forwarders, etc.—in each port.

- 3 Customs Regulations, General Order Rates, Government Departments, Port Charges, Reference Files, Etc.
- 4 Every Principal Customs Port has a Special Port Section—over 150 Ports.
- 5 General Review giving a very broad and clearly explained description of the necessary routine and formalities connected with all phases of Importing into the U. S. A.
- 6 Special Sections for Canada, Mexico, Virgin Islands, Porto Rico, Honolulu.

1924 Edition now ready

\$5.00  
Order Now  
ADDRESS

(N. Y. Exchange)

### CUSTOM HOUSE GUIDE

Brokers' Room, Custom House, New York, N. Y., U. S. A.  
AGENCIES THROUGHOUT THE WORLD



## What's behind a General Motors car?

### 1. Manufacturing economies.

By coordinating the purchasing power of its car and accessory divisions, General Motors effects large economies in the building of each car.

### 2. Volume production.

The volume of sales is so great—nearly 800,000 cars and trucks were produced and sold last year—that it has been possible to make the margin of profit on each car relatively low.

### 3. Engineering facilities.

General Motors interchanges the specialized experience and engineering talent of its divisions, so that each General Motors car benefits in engineering from its association with the others.

### 4. Research facilities.

General Motors maintains for its divisions the largest automotive research laboratories in the world, where a small army of scientists is ceaselessly working for the improvement of General Motors cars.

### 5. Permanent service.

General Motors has girdled the globe with sales and service organizations. Since it produces parts and accessories used in building its cars, the purchaser of a General Motors car is assured that parts and service will be available throughout the life of the car.

General Motors makes a car for every purse and every purpose. And by reason of the facts given above, it offers the utmost in motor car value in each price class.

*Further information regarding General Motors may be had by writing to General Motors Export Company, 224 West 57th Street, New York City.*

# GENERAL MOTORS

MAKERS OF MOTOR CARS, TRUCKS, ACCESSORIES AND EQUIPMENT

BUICK . CADILLAC . CHEVROLET . OAKLAND . OLDSMOBILE . GMC TRUCKS

New York . London . Paris . Copenhagen . Soerabaia . Bombay . Calcutta . Shanghai . Manila . Honolulu  
Sydney . Melbourne . Wellington . Madrid . Johannesburg . Mexico City . São Paulo . Buenos Aires



interesting than to leave the City with little asphalt-going to worry either horse or rider, and passing the old Country Club at Churubusco, to turn toward that section of marshy land south of the City known as Xochimilco, a former Indian stronghold, where in early days it is said that a tribe called Xochimilcas descended and established a kind of independent district, half land, half water, cut with canals, where, Venetian-like, innumerable dugouts plied their way and defended themselves in their amphibious kingdom against the Spanish invaders. Here a type of floating garden still exists interspersed with creepers and eucalyptus, and one of the chief charms of the place is to take one of the small Indian canoes and to float through a profusion of poppies, roses, lilies and other flowers, to the sound of guitars and Spanish songs in boats of neighboring excursionists through this section of lotus-eating oblivion where time seems to be forgotten, and "mañana" is the motto to guide all visitors.

From the Xochimilco section one may ride past the Pedregal, a solidified ancient lava stream, filled with caves and forbidding in aspect, where bandits once flourished and where the golden

treasure of Moctezuma was buried, so the legend goes, and later found by Cortéz and taken back to Spain by him. Not far from this romantic spot is the village of Coyoacan, the first seat of the Government of Spain in "New Spain," where is found a delightful Dominican monastery from the early part of the sixteenth century—a splendid example together with the Church of San Juan Bautista adjoining it, of the Spanish building in Mexico at the time of the Conquest.

Perhaps the most delightful destination for an all-day ride near the capital is the Desierto de los Leones, the Lions' Desert, though it is anything but a desert, and we are authoritatively informed that there never were lions there—its name originating with a family that long made its headquarters in the vicinity. The two-hour or so ride to the edge of the "desert" lies over rather bare hills deep cut by seasonal rains and unrelieved in monotony save by the occasional splendid views of the capital and valley of Mexico, and the promise as one mounts higher and higher, of the cool, inviting mountains. At last one comes to the Desert proper and here the trail becomes steeper and winds its picturesque length half-way up a side valley, through dense woods dank with



### *Conveniencing the Diplomat and the Consul*

**W**HEN Duty or Pleasure calls the Foreign Service officer to the Nation's capital, the official and social environment and the luxurious comfort at The Shoreham enable him to dwell in his own realm.

*Liberal Discounts to  
Diplomatic and Consular Representatives*

## SHOREHAM HOTEL

15th and H Streets, N. W.  
Washington, D. C.



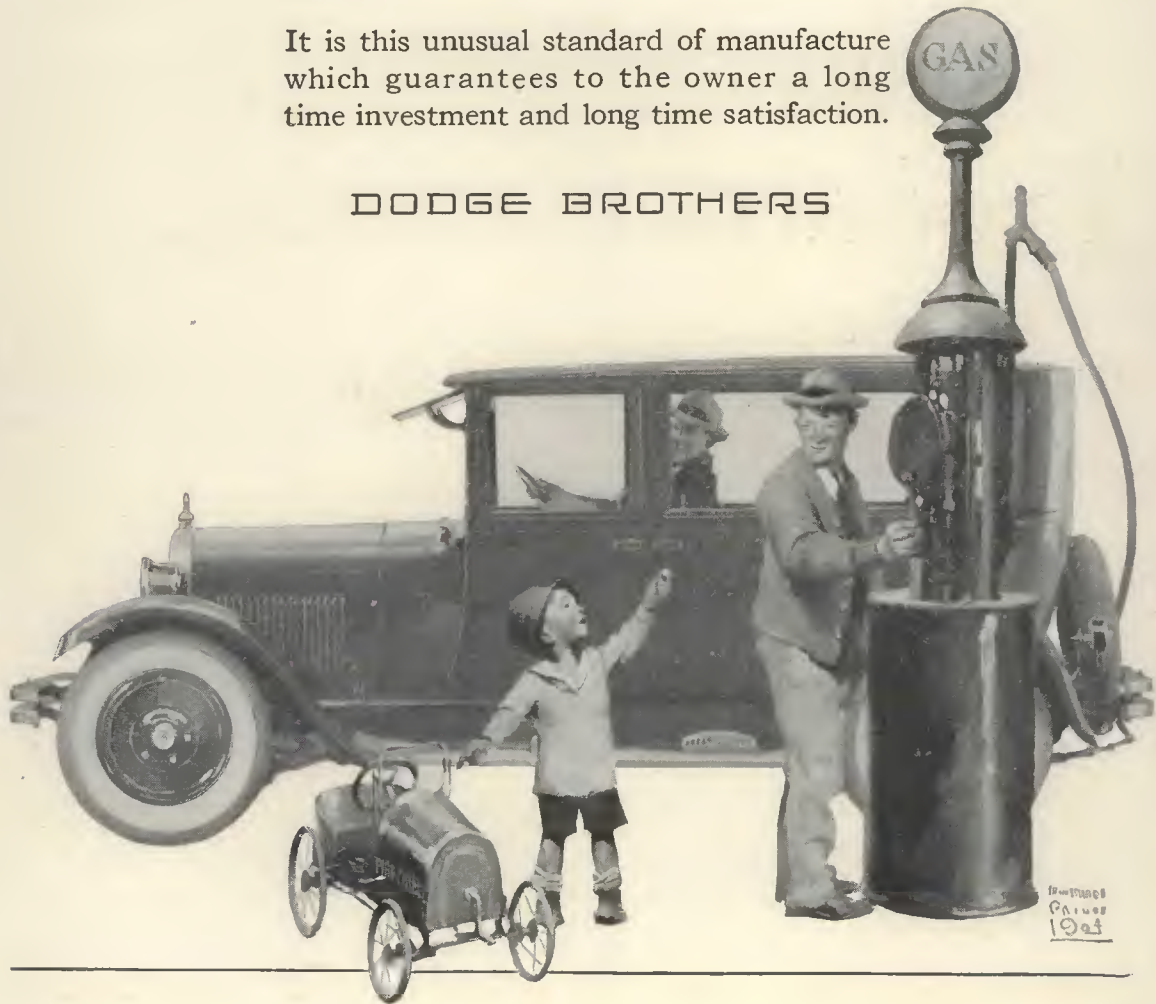
## A LONG TIME INVESTMENT

Dodge Brothers Motor Cars give satisfactory, reliable service over a far greater number of miles than is commonly expected of an automobile.

Fine materials, rigid inspection and constant care in assembling, all contribute their share in making Dodge Brothers Motor Car yield a dollar's worth of service for every dollar invested.

It is this unusual standard of manufacture which guarantees to the owner a long time investment and long time satisfaction.

DODGE BROTHERS





STANDARD OIL CO. OF NEW YORK

26 Broadway

New York



*The Mark of Quality*

# Socony Products

**Illuminating Oils**

**Lubricating Oils and Greases**

**Gasoline and Motor Spirits**

**Fuel Oil**

**Asphaltums, Binders and  
Road Oils**

**Paraffine Wax and Candles**

**Lamps, Stoves and Heaters**

*Branch Offices in the Principal Cities of*

|            |                     |            |
|------------|---------------------|------------|
| Japan      | Philippine Islands  | Turkey     |
| China      | Straits Settlements | Syria      |
| Indo-China | Netherlands India   | Bulgaria   |
| Siam       | South Africa        | Greece     |
| India      | Australasia         | Jugoslavia |

moisture. Arrived at the top of the ridge and almost at the continental divide, one is amply repaid for the long trip. Time rolls back several centuries, for there before one is a monastery built by the Carmelites in 1606. It must once have been a veritable paradise "where honey and all good things flow." One can picture the happy hours its jovial inhabitants must have passed in their ideal retreat. There are flowers in profusion, cloistered walks for meditation upon the abstrusiveness of the Gregorian philosophy, and, last but not least, walled gardens for those rare lighter moments when even the monastic sips his cup of cheer.

The monastery at present is badly run down and partly in ruins. Possibly it is the more picturesque on that account. Tucked away as it is, high in the mountains above the Valley of Mexico, and surrounded by an ancient forest, its massive walls, venerable and moss-grown, it is of a picturesqueness hard to equal.

Easily next in interest to the Lions' Desert is the Convent of Remedios, an easy two hours' ride from Mexico City. The landscape for most of the journey is rolling, and the way takes one past large haciendas and through innumerable Indian villages varying in architecture from the comparative opulence of mud houses to the rustic squalor of thatched lean-to huts, each with a small garden in front fenced in by even rows of straight organ cactus. At no time is one far from fields of neatly spaced, straight rowed maguey; and, if fortunate, one may happen along when the sap is being extracted. When fresh the sap is called honey water, which is sweet and refreshing; when fermented it becomes "pulque," the vilest smelling and tasting beverage the world has known—consumed by the Mexican peon with avidity on all occasions.

The convent itself occupies a commanding position, and during several revolutions has proved itself of strategic importance. Built by Indian labor under the supervision of the Spanish padres, it was once a place of considerable importance and a thriving village grew up about its walls. A remarkably fine aqueduct was also built by the Spaniards to bring fresh mountain water to the Convent, but during the past revolutions the lead lining of the sluiceways has all been stolen and the system allowed to fall into disrepair, so that at the present time the parched and poverty-stricken village is meagerly supplied with a doubtful looking fluid brought up on the backs of burros.

Around the base of the convent, one can see the trenches and dugouts of the revolutionary

# INVESTMENT SERVICE WHEREVER THE CABLE GOES

**FACILITIES** afforded bond buyers by The National City Company far outreach the boundaries of the United States.

Through the close affiliation of the company with the world-wide branches of The National City Bank of New York and the International Banking Corporation — which is owned by the Bank—late quotations and information on dollar securities are available in many foreign countries.

Cable communication enables The National City Company, through the banking organizations, to duplicate, to a degree, the comprehensive service given to investors through its offices in more than 50 leading cities in the United States and Canada, and in London, Geneva and Tokio.

Customers in any part of the world may arrange for the safe keeping of securities and for the collection and distribution of income through the Customers' Securities Department of The National City Bank.



**INQUIRIES** addressed to our New York or London Offices will receive prompt attention. Lists of current investment offerings will be found at all offices of The National City Bank and International Banking Corporation.

## The National City Bank of New York

*Head Office: 55 Wall Street, New York*

*New York City Offices*

42nd Street at Madison Avenue

Fifth Avenue at 28th St. Bowery at Bond Street  
57th Street at Seventh Ave. 72nd Street at Broadway

### Foreign Branches

|   |  |  |
|---|--|--|
| <b>ARGENTINA</b><br>Buenos Aires<br>Rosario                                   | <b>CHILE</b><br>Santiago<br>Valparaiso                                       | <b>ITALY</b><br>Genoa  |
| <b>BELGIUM</b><br>Antwerp<br>Brussels   | <b>CUBA</b><br>Havana and all<br>important cities                            | <b>PERU</b><br>Lima  |
| <b>BRAZIL</b><br>Pernambuco<br>Rio de Janeiro<br>Santos [Agency]<br>Sao Paulo | <b>ENGLAND</b><br>London<br>City Branch<br>West End Br.                      | <b>PORTO RICO</b><br>San Juan                                |
|   | <b>FRANCE</b><br>The National<br>City Bank of<br>New York<br>(France), S. A. | <b>URUGUAY</b><br>Montevideo<br>Sub-branch—<br>Calle Rondeau |
|   |  | <b>VENEZUELA</b><br>Caracas                                  |

## International Banking Corporation

[Owned by The National City Bank of New York]

*Head Office: 60 Wall Street, New York*

### Branches

|   |  |   |
|---|--|---|
| <b>CALIFORNIA</b><br>San Francisco  | <b>JAPAN</b><br>Kobe                       | Tokio<br>Yokohama                         |
| <b>CHINA</b><br>Canton<br>Hankow<br>Harbin                                    | Hongkong<br>Peking<br>Shanghai<br>Tientsin | <b>JAVA</b><br>Batavia Sourabaya          |
| <b>DOMINICAN REPUBLIC</b><br>Santo Domingo City and<br>other important cities | <b>PHILIPPINE ISLANDS</b><br>Cebu Manila   | <b>REPUBLIC OF PANAMA</b><br>Colon Panama |
| <b>ENGLAND—London</b>   | <b>SPAIN</b><br>Barcelona Madrid           | <b>STRAITS SETTLEMENTS</b><br>Singapore   |
| <b>INDIA</b><br>Bombay  | Calcutta<br>Rangoon                        |   |

# THE NATIONAL CITY COMPANY

HEAD OFFICE: NATIONAL CITY BANK BUILDING, NEW YORK

Geneva

LONDON: 34 BISHOPSGATE, E. C. 2

Tokio

BONDS

SHORT TERM NOTES

ACCEPTANCES



## *Leadership*

**F**AST, visible typewriting began with the introduction of the Underwood Typewriter more than a quarter of a century ago. During this time there have been no changes in the fundamental principles of its construction, although certain minor improvements have been made. The Underwood Typewriter still holds the sovereign position in typewriter speed, accuracy and durability. It has proved its right to this leadership by winning every International Typewriter Contest since its inception eighteen years ago.

Commerce pays tribute by acceptance—at the dawn of every business day *more than two million* Underwoods go into action.

UNDERWOOD TYPEWRITER CO., INC.  
 1413 New York Avenue N. W.  
 Washington, D. C.

*Branches in all Principal Cities*

**UNDERWOOD**  
*Speeds the World's Business*

## MONEY FOR YOUR PHOTOGRAPHS

We are looking for interesting industrial and commercial pictures for publication in the *NATION'S BUSINESS*, official magazine of the U. S. Chamber of Commerce.

Clear, sharp photographs of natives working in a modern looking mill or factory, as well as the contrasting opposite—natives working at their tasks in primitive ways.

We want to illustrate by photographs progress or the lack of it, as the case may be, in the industry and commerce of as many peoples as possible.

\$2.50 will be paid for each photograph accepted, and any we can't use will be returned promptly by insured mail. A few words of description should be penciled on the back of each photograph.

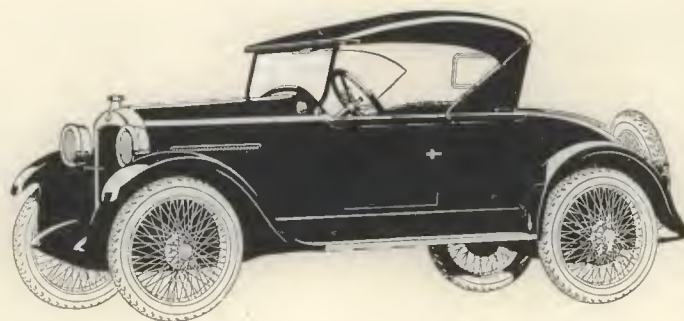
**The NATION'S BUSINESS**  
*United States Chamber of Commerce*  
**Washington, D. C.**

forces, and looking off to where the opponents were located, one can see a symmetrical hill of considerable height still perceptibly terraced, upon which, the legend runs, Moctezuma had a garden and summer residence.

Many pages could be written upon the subject of the limitless charm of Mexico to the horse-back rider. These few rambling paragraphs may serve to suggest the wealth of natural scenery and historical legend which the country offers. But if the reader himself would experience the charm and mystery of this contemporary antiquity he is counselled to view the Mexican capital at dusk from the brow of a nearby hill, and from the back of a horse to look off across the sleepy valley of Anahuac as the lights of the city come on one by one, and with the fresh evening breeze in his face, commend himself to the enchantment of the Aztec *Gotterdammerung*.

The following promotions were announced November 20. To Class III, Alexander C. Kirk and G. Howland Shaw. To Class VII, Gerhard Gade, Walter T. Pendergast, and William H. Taylor.





**I**T has been the continuous policy of the Hupmobile factories to build a motor car which would be capable of hard, consistent service over a long period of years. Over 200,000 Hupmobiles have been manufactured with this ideal in mind, and in actual use, have proven that the purpose of the makers has been realized in the car itself.

# Hupmobile

HUPP MOTOR CAR CORPORATION

Detroit, Michigan, U.S.A.

*Cable Address: "Hupp" Detroit*

7





# THE AMERICAN FOREIGN SERVICE JOURNAL



|               |  |                |  |
|---------------|--|----------------|--|
| Illinois      | William B. McKinley, Rep.; Charles S. Deneen, Rep., succeeding to scat now held by Medill McCormick.   | Missouri       | James A. Reed, Dem.; Selden P. Spencer, Rep.   |
| Indiana       | James E. Watson, Rep.; Samuel M. Ralston, Dem.   | Montana        | Burton K. Wheeler, Dem.; Thomas J. Walsh, Dem., reelected.                                   |
| Iowa          | Albert B. Cummins, Rep.; race between Smith W. Brookhart, Rep., incumbent, and Daniel F. Steck, Dem., undecided, but Brookhart has apparently won. | Nebraska       | Robert B. Howell, Rep.; George W. Norris, Rep., reelected.                                   |
| Kansas        | Charles Curtis, Rep.; Arthur Capper, Rep., reelected.  | Nevada         | Key Pittman, Dem.; Tasker L. Oddie, Rep.   |
| Kentucky      | Richard P. Ernst, Rep.; Fred M. Sackett, Rep., succeeding to seat now held by A. Owsley Stanley, Dem.  | New Hampshire  | George H. Moses, Rep.; Henry W. Keyes, Rep., reelected.                                      |
| Louisiana     | Edwin S. Broussard, Dem.; Joseph E. Ransdell, Dem., reelected.   | New Jersey     | Edward I. Edwards, Dem.; Walter E. Edge, Rep., reelected.                                    |
| Maine         | Frederick Hale, Rep.; Bert M. Fernald, Rep., reelected.  | New Mexico     | Andrieus A. Jones, Dem.; Sam G. Bratton, Dem.  |
| Maryland      | O. E. Weller, Rep.; William Cabell Bruce, Dem.   | New York       | James W. Wadsworth, Rep.; Royal S. Copeland, Dem.  |
| Massachusetts | Frederick H. Gillett, Rep., succeeding to seat of Walsh, Dem.; vacancy due to death of Lodge filled by William M. Butler, Rep.                     | North Carolina | Lee S. Overman, Dem.; Furnifold M. Simmons, Dem., reelected.                                 |
| Michigan      | Woodbridge N. Ferris, Dem.; James Couzens, Rep., reelected.  | North Dakota   | Edwin F. Ladd, Rep.; Lynn J. Frazier, Rep.   |
| Minnesota     | Hendrik Shipstead, Farmer-Labor; Thomas B. Schall, succeeding to seat of Magnus Johnson.   | Ohio           | Frank B. Willis, Rep.; Simeon D. Fess, Rep.  |
| Mississippi   | Hubert D. Stephens, Dem.; Pat Harrison, Dem., reelected.   | Oklahoma       | John W. Harreld, Rep.; W. B. Pine, Rep., succeeding to scat now held by Robert L. Owen, Dem. |
|               |  | Oregon         | Robert N. Stanfield, Rep.; Charles I. McNary, Rep., reelected.                               |
|               |  | Pennsylvania   | George Wharton Pepper, Rep.; David A. Reed, Rep.   |
|               |  | Rhode Island   | Peter G. Gerry, Dem.; Jesse H. Metcalf, Rep., succeeding to late Le Baron Colt, Rep.         |
|               |  | South Carolina | Ellison B. Smith, Dem.; Coleman L. Blease, Dem., succeeding to scat                          |

CHARLES C. GLOVER  
Chairman of the Board



MILTON E. AILES  
President

## OFFICES CONVENIENTLY LOCATED

1503 Pennsylvania Avenue N.W.—Opposite U. S. Treasury

Dupont Circle  
1913 Massachusetts Avenue N.W.  
Seventh Street  
Corner 7th and I Streets

LETTERS OF CREDIT  
TRAVELLERS CHECKS  
SAFE DEPOSIT

Washington Heights Office  
2477 Eighteenth Street  
14th and Park Road Office  
Corner 14th Street and Park Road

CABLE TRANSFERS  
SAVINGS DEPARTMENT  
FOREIGN EXCHANGE

Diplomatic and Consular Officers are cordially invited to avail themselves of our unexcelled Banking Facilities

A BANKING CONNECTION AT THE CAPITAL IS CONVENIENT. BANK BY MAIL

# THE RIGGS NATIONAL BANK

WASHINGTON, D. C.  
RESOURCES OVER \$35,000,000



|               |   |
|---------------|---|
|               | now held by Nathaniel B. Dial, Dem.   |
| South Dakota  | Peter Norbeck, Rep.; W. H. McMaster, Rep., succeeding to seat now held by Thomas Sterling, Rcp. |
| Tennessee     | Kenneth McKeller, Dem.; L. D. Tyson, Dem., succeeding to seat now held by John K. Shields, Dem. |
| Texas         | Earle B. Mayfield, Dem.; Morris Sheppard, Dem., reelected.                                      |
| Utah          | Reed Smoot, Rep.; William H. King, Dem.   |
| Vermont       | Frank L. Greene, Rep.; Porter H. Dale, Rep.   |
| Virginia      | Claude A. Swanson, Dem.; Carter Glass, Dem., reelected.   |
| Washington    | Wesley L. Jones, Rep.; C. C. Dill, Dem.   |
| West Virginia | M. M. Neely, Dem.; Guy D. Goff, Rep., succeeding to seat now held by Davis Elkins, Rep.         |
| Wisconsin     | Robert M. La Follette, Rep.; Irving L. Lenroot, Rep.  |
| Wyoming       | John B. Kendrick, Dem.; Francis E. Warren, Rep., reelected.                                     |

After conceding his defeat, Senator Brookhart found himself according to unofficial returns some five hundred votes ahead of Daniel F. Steck, Democrat, in the Iowa senatorial contest. The ballots are being preserved for an official recount.

William M. Butler, Chairman of the Republican

National Committee, was appointed by the Governor of Massachusetts to fill the vacancy caused by the death of Senator Lodge until the next biennial election in November, 1926. According to press reports, Democrats are threatening to test the constitutionality of the law under which the appointment was made on the ground that two years cannot be considered a "temporary appointment." The other senatorial vacancy, caused by the death of Brandegee, is to be filled by special election, but the indications are that a Republican will be chosen, giving the Republicans a total of 55 seats.

A number of important changes will take place in the organization of the Senate. Through the death of Senator Lodge, Borah succeeded to the chairmanship of the Foreign Relations Committee which will have five vacancies to fill. Upon being relieved on March 4 as presiding officer of the Senate, Cummins may resume the chairmanship of the Interstate Commerce Committee, now held by Senator Smith of South Carolina. The other important committees will be headed as follows: Warren of Wyoming, Appropriations; Smoot of Utah, Finance; Curtis of Kansas, Rules; Norris of Nebraska, Agriculture; Ladd of North Dakota,



## Lubricating the World's Power

The bulk of the world's mechanical power comes from four sources—steam, water, electricity, and gas.

Power efficiency depends upon lubricating efficiency. For over half a century the Vacuum Oil Company has specialized upon this great problem.

Today this company is looked to for correct lubrication by operators of every known kind of power machinery.

Gargoyle Lubricants are known the world over. The red Gargoyle on cans and barrels points the way to higher mechanical efficiency.



**Lubricating Oils**

*A grade for each type of service*

**VACUUM OIL COMPANY**

# Globe-Wernicke

"Built-To-Endure"

## STRUCTURAL STRENGTH SAFES

have been awarded not only the Underwriters' label as a proof of fire resistance, but are built far beyond the requirements of the Underwriters' Standard Test in Fire Resistance, Structural Strength, Thief or Burglar Resistance.

The principles of construction originated by us in the Steel Safe gave the greatest Strength in the Structure. The Globe-Wernicke Structural Strength Safe is built not only to resist all the heat which can be generated in one place in a burning building but the fall plus the crushing load of a collapsing building.

Structural Strength is most important in a Safe because the fall and the crushing load of collapsing buildings is the cause in most cases of the contents being lost.

GLOBE-WERNICKE STEEL FILING CABINETS FIT PERFECTLY IN GLOBE-WERNICKE STRUCTURAL STRENGTH SAFES. The size of the interior is exact to take the sections and there is no lost space.

This Safe is fitted with (beginning at top)

One No. A-33 Plain Shelf.

Five No. 2-A Partitions 2 inches high.

One No. A-33 Plain Shelf.

One No. 7317 D. F. (33 inch full width steel section) 6 document files.

One No. 7617 C. I. (16½-inch half width steel section) 3 card index files 3x5 and 3 lock boxes.

One No. 7617 C. S. P. (16½-inch half width steel section) locker or cupboard.

One No. 7317 V. L. (33-inch full width steel section), 2 vertical letter files.

One No. A-33 Plain Shelf.

Two No. A-33 Roller Shelves.

This particular interior is merely one suggestion. Steel sections, roller shelves, plain shelves and partitions can be supplied to fit any need. Any Globe-Wernicke 33-inch width Filing Cabinet section of the 17-inch depth can be used in the safe. The half sections can also be used side by side.



Catalogue No. 800 Explains all Globe-Wernicke Filing Cabinets.

General Supply Committee's Item No. 9556

## The Globe-Wernicke Co.

WASHINGTON, D. C., SALESROOM

1218-1220 F STREET N. W.



Public Lands; Jones of Washington, Commerce; Johnson of California, Immigration; Wadsworth of New York, Military Affairs; Hale of Maine, Naval Affairs; Moses of New Hampshire, Post Offices; Cummings of Iowa, Judiciary.

The floor leadership of the Senate is likely to go to Senator Borah or to Senator Curtis. A noteworthy feature of the new Congress is the large number of important committee assignments which go to Western Senators.

The electorate cast the largest vote in American history—between 30,000,000 and 32,000,000 as compared with 26,675,000 votes in 1920. This record-breaking ballot may be attributed to a number of causes. The organized appeal, made by both Coolidge and Davis as well as by the American Legion to go to the polls as a patriotic duty regardless of partisanship, must have considerably increased the vote. A large number of women who did not avail themselves of the franchise in 1920 doubtless discharged their duty on November 4 after four more years of political education.

The radio for the first time in history had a tremendous effect on the size of the votes by broadcasting political speeches to millions of homes and thus creating a more personal interest

in the speakers and the issues of the campaign than was formerly possible through the newspapers alone. On the evening before the election by means of linked radio stations, Mr. Davis' voice from New York was heard in Boston, Chicago, Louisville, Denver, Seattle, and San Francisco, and two hours later the President made his final statement which was also carried throughout the United States by the same medium.

Very many voters refused to vote a straight party ticket. In New York, for example, Roosevelt was defeated for Governor though Coolidge piled up a plurality of about 850,000 votes; in Ohio a Democrat won the gubernatorial race by 150,000 while Coolidge carried the State by 650,000; and in Illinois the Republican Governor, although re-elected, polled 420,000 votes less than President Coolidge. The women generally refused to vote according to sex, although four women carried off honors at the polls, Mrs. Miriam Ferguson and Mrs. Nellie Ross, both Democrats, became Governors of Texas and Wyoming respectively, Mrs. Florence Knapp, Secretary of State in New York, and Mrs. Mary Norton, Member of Congress from the 12th New Jersey District.

## *To the Consular Representatives of the United States:*

The United States Fidelity and Guaranty Company puts at your disposal its services in writing your bond. Special attention is given to the requirements of consular officers, our Washington manager, Mr. Lee B. Mosher, having formerly been in the Consular Service. When you have in mind any form of bond, this company will be pleased to write it for you.

JOHN R. BLAND, President.

### **United States Fidelity and Guaranty Company**

RESOURCES OVER \$34,000,000.00

Washington Branch Office

Suite 327, Southern Building, 15th and H Streets, Washington, D. C.

*The  
American Foreign Service  
Association*

Honorary President

CHARLES E. HUGHES.....*Secretary of State*

---

Honorary Vice-Presidents

JOSEPH C. GREW.....*Under Secretary of State*  
LELAND HARRISON.....*Assistant Secretary of State*  
J. BUTLER WRIGHT.....*Assistant Secretary of State*  
WILBUR J. CARR.....*Assistant Secretary of State*

---

..... President  
..... Vice-President

---

EXECUTIVE COMMITTEE

EVAN E. YOUNG, *Consular Officer*.....Chairman  
HUGH R. WILSON, *Diplomatic Officer*.....Vice-Chairman  
EDWARD J. NORTON, *Consular Officer*  
ALLEN W. DULLES, *Diplomatic Officer*  
ADDISON E. SOUTHARD, *Consular Officer*

---

H. MERLE COCHRAN, *Consular Officer*  
Secretary-Treasurer of the Association

---

JOURNAL STAFF

FELIX COLE, *Consular Officer*.....Editor  
J. THEODORE MARRINER, *Diplomatic Officer* } Associate  
HASELL H. DICK, *Consular Officer* } Editors  
F. LAMMOT BELIN, *Diplomatic Officer* }  
EDWIN C. WILSON, *Diplomatic Officer*...Business Manager  
IRVING N. LINNELL, *Consular Officer* } Associate Business  
THOMAS M. WILSON, *Consular Officer* } Managers  
EDWARD L. REED, *Diplomatic Officer*..Treasurer of Journal

---

The American Foreign Service Association is an unofficial and voluntary association embracing most of the members of *The Foreign Service of the United States*. It was formed for the purpose of fostering *esprit de corps* among the members of the Foreign Service, to strengthen service spirit and to establish a center around which might be grouped the united efforts of its members for the improvement of the Service.



# World-Wide Travel Service

Regular, dependable and efficient services to all parts of the world are maintained by United States Government ships.

## New York and Europe

United States Lines' ships offer an ideal passage for all classes of travel between New York, Cobh (Queenstown), Plymouth, Cherbourg, Southampton and Bremen—ports of call for quick connections to every part of Europe. Typical American comforts and conveniences are provided on all vessels of the Line:

|                       |                         |
|-----------------------|-------------------------|
| S. S. Leviathan       | S. S. America           |
| S. S. Pres. Harding   | S. S. Republic          |
| S. S. Pres. Roosevelt | S. S. George Washington |

## New York and South America

Regular fortnightly sailings by the four white sister ships of the Pan America Line:

|                       |                     |
|-----------------------|---------------------|
| S. S. Southern Cross  | S. S. Pan Amrica    |
| S. S. American Legion | S. S. Western World |

These vessels are the finest and fastest between New York, Rio de Janeiro, Santos, Montevideo and Buenos Aires.

## United States and Asia

Ten famous and splendidly appointed "President" ships are operated in the trans-Pacific service. Five of these vessels

|                      |                       |                     |
|----------------------|-----------------------|---------------------|
| S. S. Pres. McKinley | S. S. Pres. Grant     | S. S. Pres. Jackson |
| S. S. Pres. Madison  | S. S. Pres. Jefferson |                     |

are operated by the Admiral Oriental Line over the Short Route from Seattle via Victoria.

|                       |                    |                    |
|-----------------------|--------------------|--------------------|
| S. S. Pres. Lincoln   | S. S. Pres. Taft   | S. S. Pres. Pierce |
| S. S. Pres. Cleveland | S. S. Pres. Wilson |                    |

are operated by the Pacific Mail S. S. Co. over the Sunshine Belt from San Francisco with a stop at Honolulu. Yokohama, Kobe, Shanghai, Hong Kong and Manila are ports of call via either route.

*For illustrated booklets giving full information write to Information Department*

**UNITED STATES SHIPPING BOARD**  
Washington, D. C.